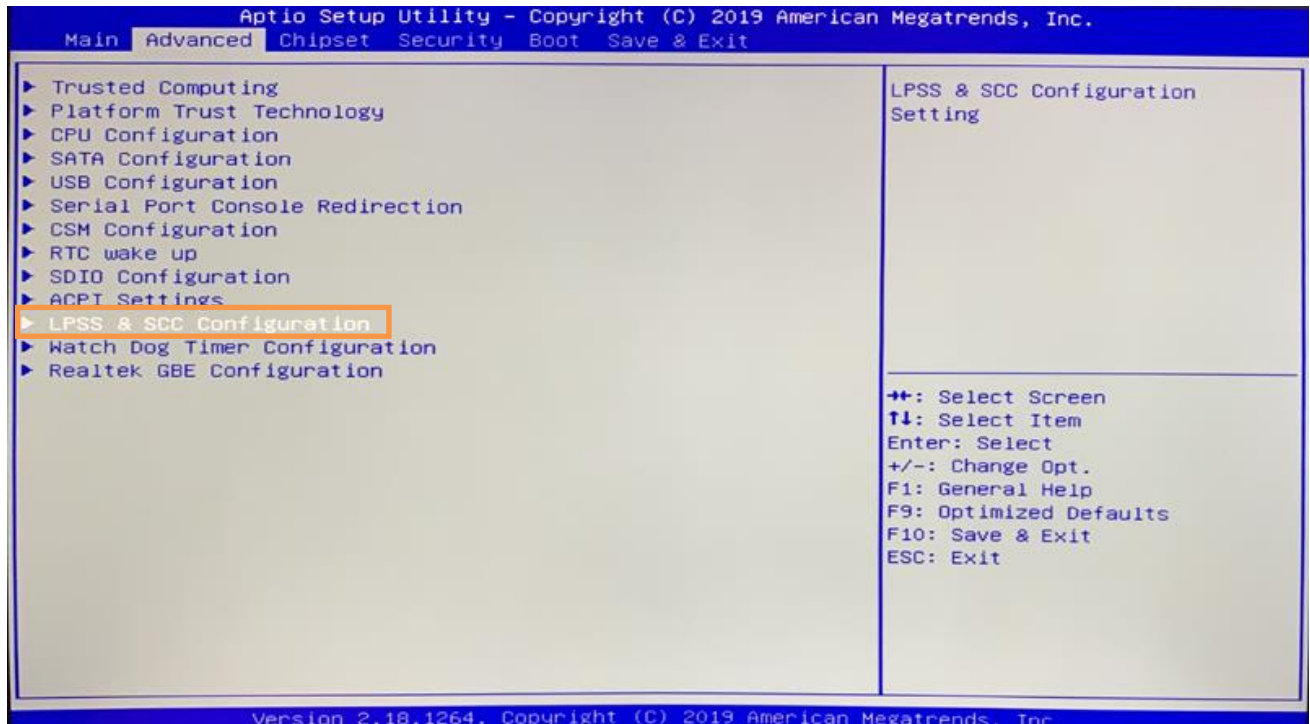


## EBOX-58 Series Win 10/ Win 10 IoT RS-232 driver installation procedures

EBOX-58 Series RS-232 port support TX/ RX two pins only, driver installation steps as below:

### 1. ACPI mode BIOS setting:

- Power on and press "Del" key and log into BIOS setup menu.
- Move to "Advanced".
- Move to "LPSS & SCC Configuration".

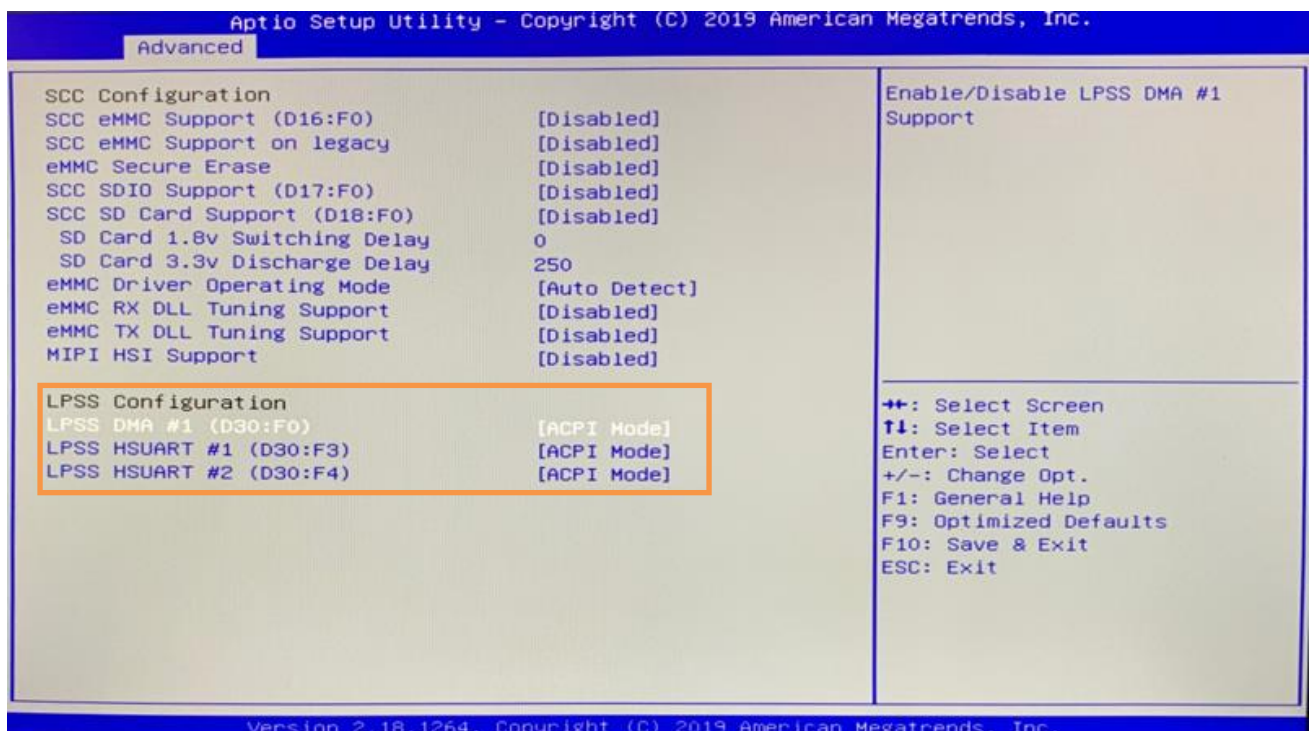


- Change below setting to ACPI mode:

LPSS DMA #1 (D30:F0) => ACPI Mode

LPSS HSUART #1 (D30:F3) => ACPI Mode

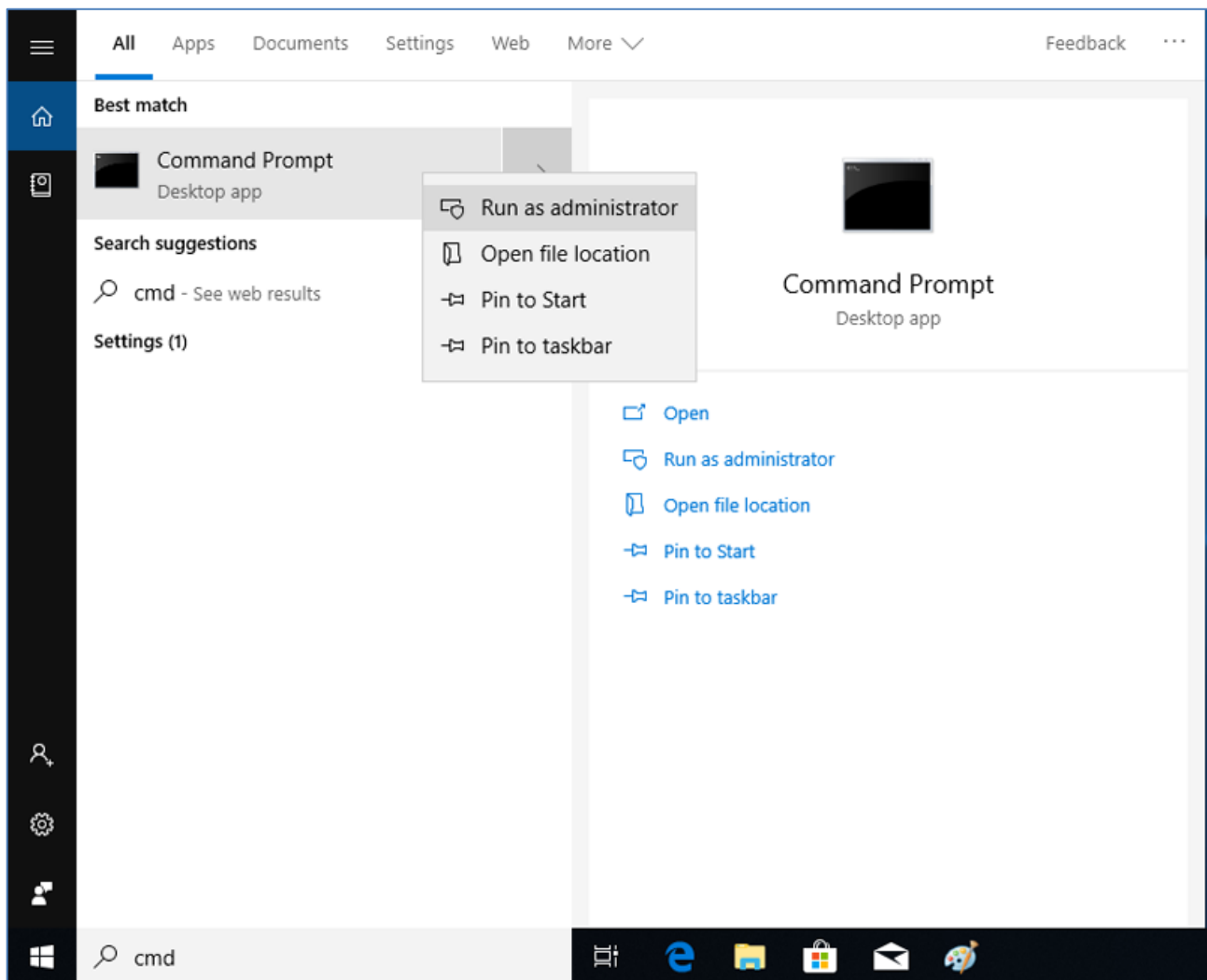
LPSS HSUART #2 (D30:F4) => ACPI Mode



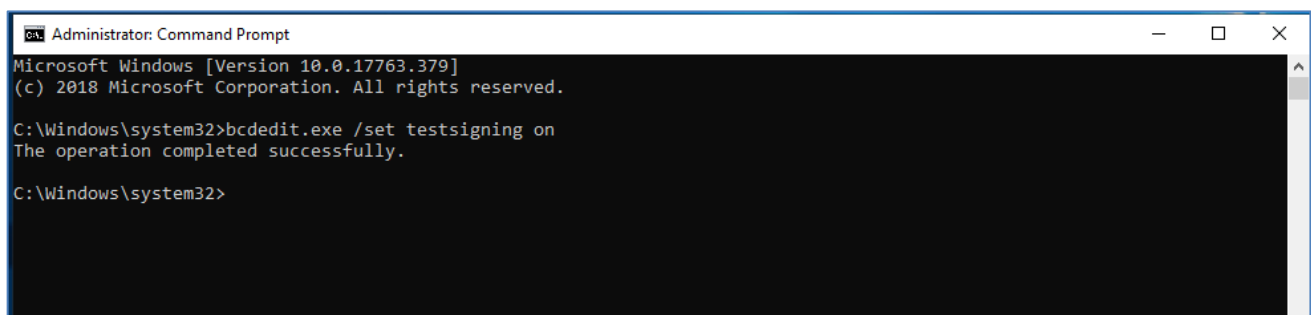
- Press "F10" key to save settings and exit.

## 2. Disable driver signature enforcement permanently:

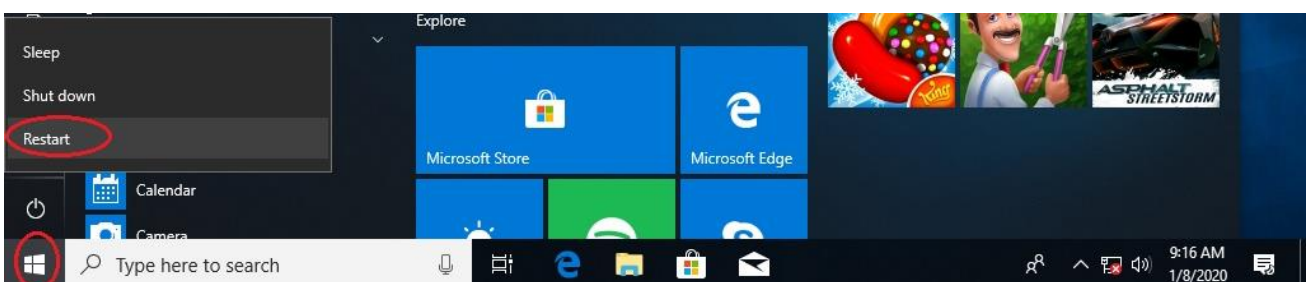
A. Search "cmd" and right click mouse to choose "Run as administrator"



B. Type "bcdedit.exe /set testsigning on".



C. Reboot system.



### 3. Download EB-58 Series Serial IO driver and install.

Unzip serial\_io\_driver.zip, and execute LPSS\_X64\_Windows10\_Install\_152803.exe to install.

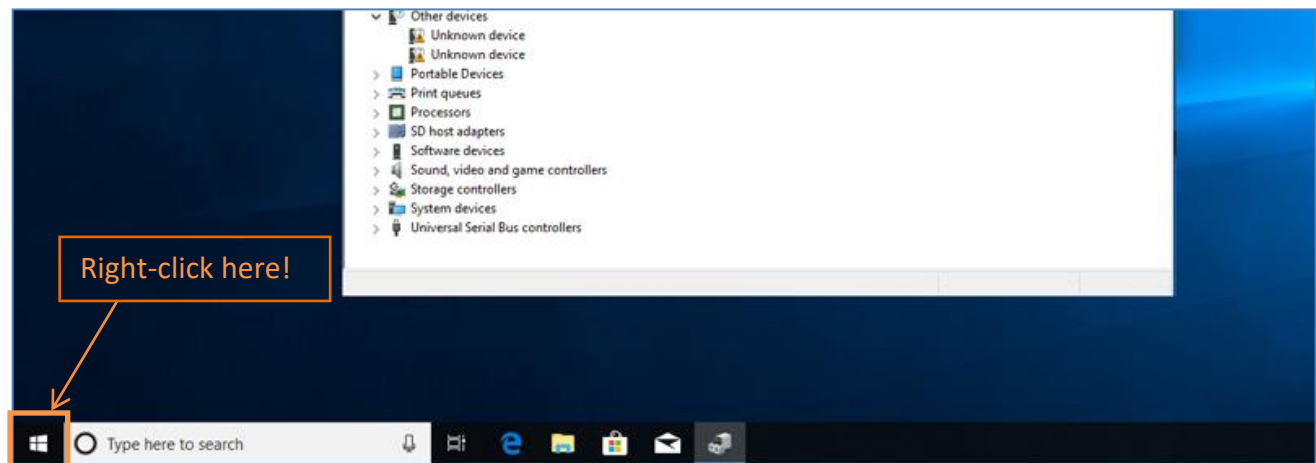
[http://download.compactpc.com.tw/2014%20DMP%20Webiste/EB-58%20Series%20Drivers/serial\\_io\\_driver.zip](http://download.compactpc.com.tw/2014%20DMP%20Webiste/EB-58%20Series%20Drivers/serial_io_driver.zip)

### 4. Download EB-58 Series RS-232 driver and install.

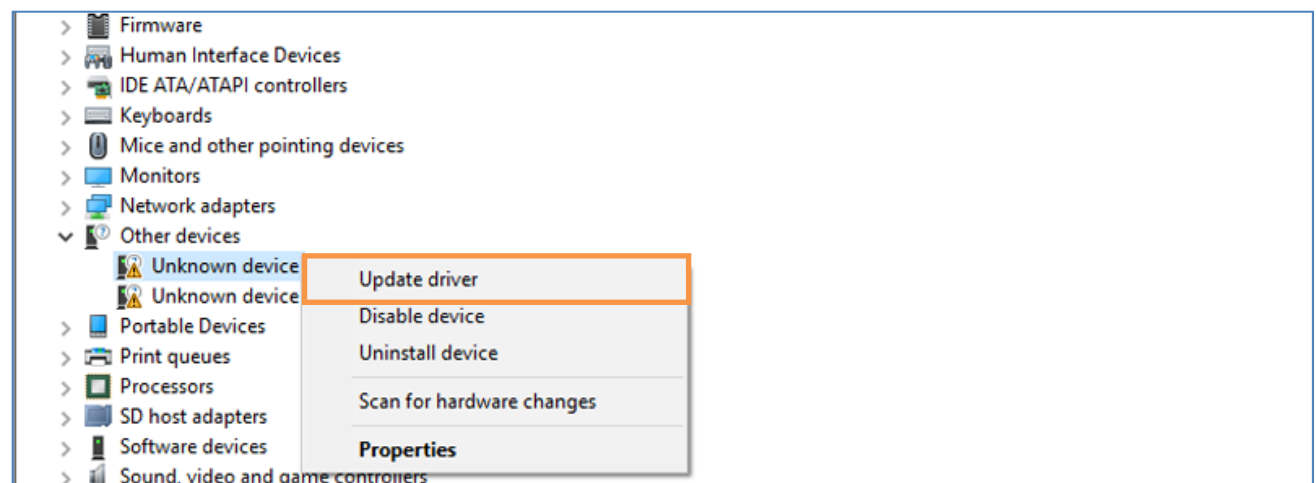
A. Download EB-58 Series RS-232 driver and unzip.

[http://download.compactpc.com.tw/2014%20DMP%20Webiste/EB-58%20Series%20Drivers/rs-232\\_driver.zip](http://download.compactpc.com.tw/2014%20DMP%20Webiste/EB-58%20Series%20Drivers/rs-232_driver.zip)

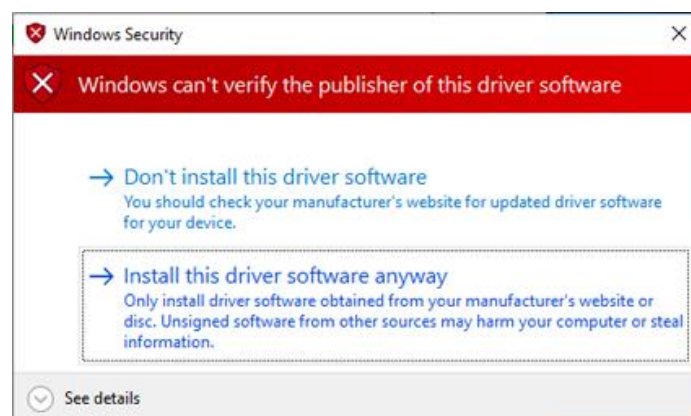
B. Right-click windows icon on the bottom-left corner of desktop and select Device Manager.



C. Right-click on two unknown devices, and select Update driver to install RS-232 driver.



E. Windows Security message will pop out; click "Install this driver software anyway."



F. After installed, RS-232 port TX/ RX can be used.

### Additional information:

1. To use RS-232 port in Win 10 or Win 10 IoT, disable flow control for TX/ RX function is necessary.
2. Win 10 or Win 10 IoT users must follow steps 1~4 in order to use EB-58 Series' RS-232 ports with DMP's modified driver. For users who need to resume default setting, follow Step 2 and change B. Type "bcdedit.exe /set testsigning **off**" to undo permanently setting. And the Device Manager will show UartSample Device with exclamation mark and unable to use.

